

**SUBDIVISION PLAN OF, PARCEL "A" (REFERENCE PLAN 4434),
 PARCEL "ONE" (REFERENCE PLAN 8086) OF PART ON PLAN
 WITH FEE DEPOSITED 52243F AND OF PARCEL "B" PLAN
 WITH FEE DEPOSITED 52243F EXCEPT: PARCEL "ONE"
 REFERENCE PLAN 8086 AND PLAN EPP68648, ALL OF
 DISTRICT LOT 216 GROUP 2 NEW WESTMINSTER DISTRICT.**

PLAN EPP125415

Figure 3

PURSUANT TO SECTION 67 OF THE LAND TITLE ACT.
 TOWNSHIP OF LANGLEY, BCGS 92G.018



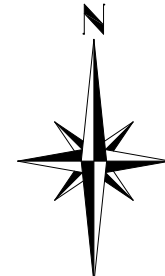
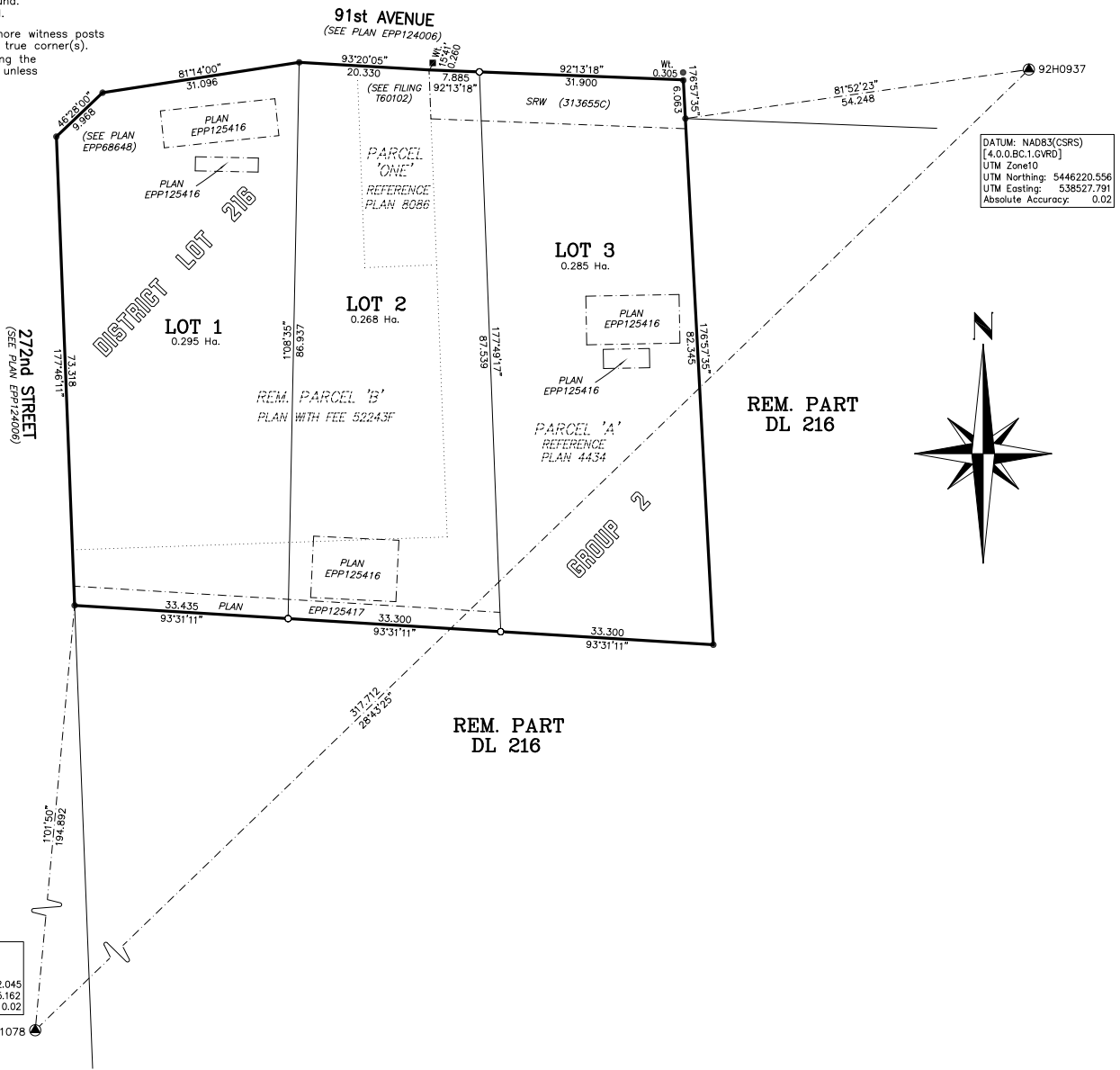
All distances are in metres

The intended plot size of this plan is 432mm
 in width by 560mm in height (C Size) when
 plotted at a scale of 1:500

Legend:

- ▲ Denotes Control Monument found.
- Denotes Standard Iron Post found.
- Denotes Standard Iron Post set.
- Denotes Lead Plug found.
- NF Denotes Nothing found.

This plan shows one or more witness posts
 which are not set on the true corner(s).
 Witness posts are set along the
 production of a boundary unless
 otherwise noted.



Integrated Survey Area No. 41
 Township of Langley, NAD83 (CSRS) 4.0.0.BC.1.GVRD

This plan shows horizontal ground level distances,
 unless otherwise specified. To compute grid distances,
 multiply ground level distances by the average
 combined factor of 0.9996202. The average combined
 factor has been determined based on Geodetic Control
 Monument 92H0937.

Grid Bearings are derived from Geodetic Control Monuments
 92H0937 and 93H1078 and are referred to the
 central meridian of UTM zone 10.

The UTM coordinates and estimated absolute
 accuracy achieved have been derived from
 MASCOT published coordinates and standard
 deviations of geodetic control monuments
 92H0937 and 93H1078.

This subdivision lies within the
 Agricultural Land Reserve
 This plan lies within the jurisdiction of the
 Approving Officer for the Township of Langley.
 Inspected under the Land Title act
 this 6th day of October, 2023.
 The field survey represented by this plan was
 completed on the 8th day of November, 2022.
 John P. Onderwater, BCLS #708.

AXIS LAND SURVEYING LTD.
 B.C. & CANADA LANDS SURVEYORS
 #300-22420 Dewdney Trunk Road
 Maple Ridge B.C. V2X 3J5
 File: 6648-S3
 (TOL FILE: 14-32-0003)

This plan lies within the
 Metro Vancouver Regional District